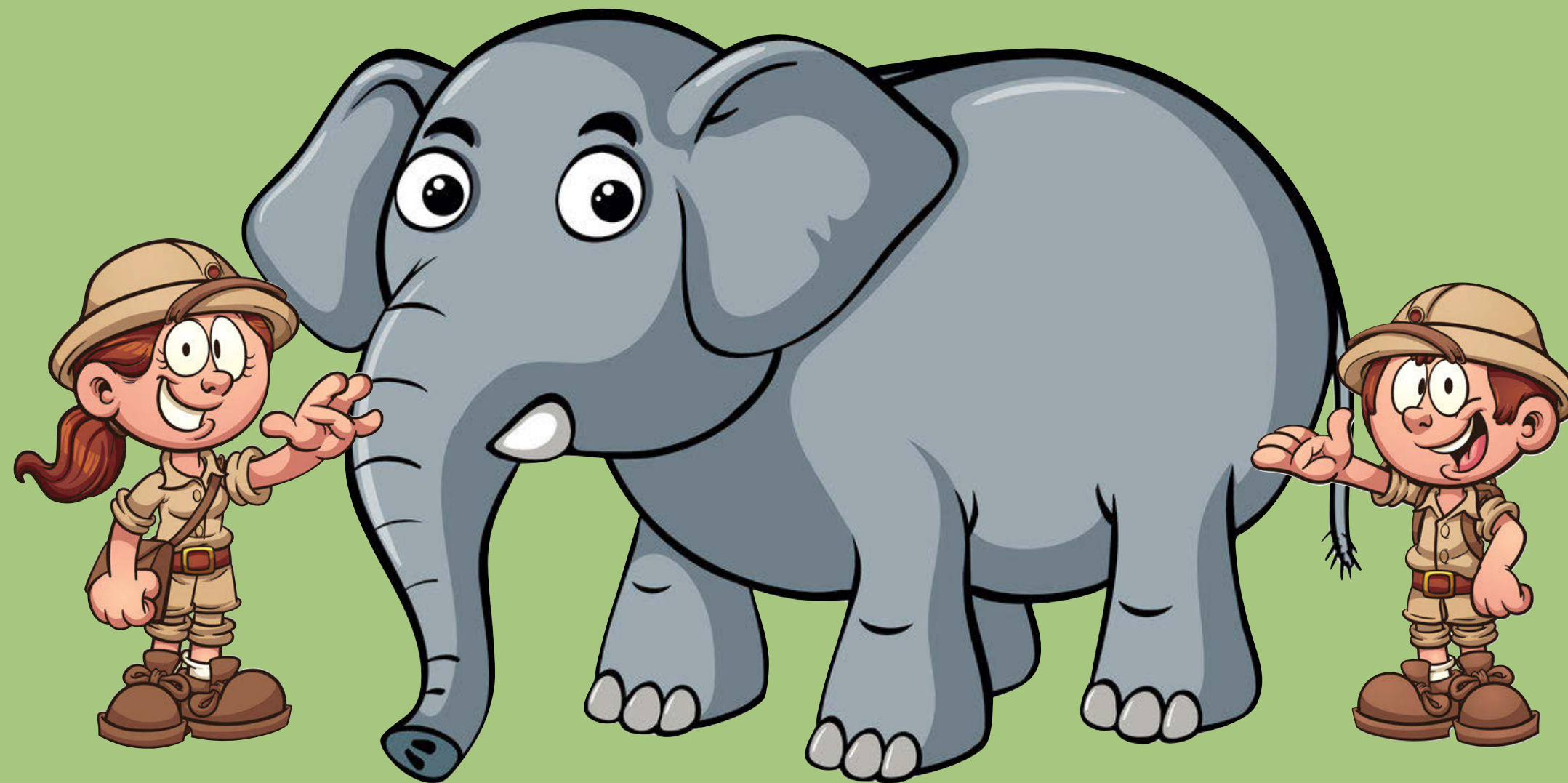


Animals of India



Learning Objective: to know that animals can be grouped in different ways

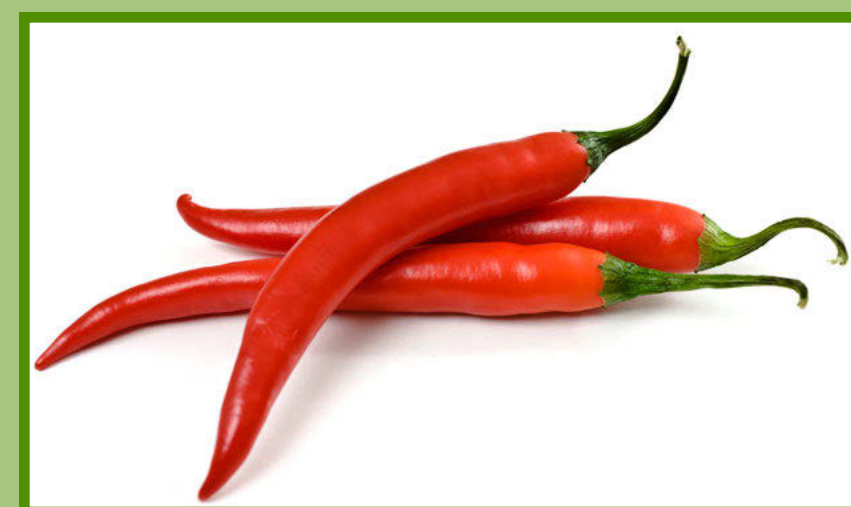
Back

Next

A criterion is a condition on which something is judged. It can be a question that you ask in order to sort items into different groups.



What criterion could you use to sort these items into groups?
Think, pair, then share your ideas.



Back

Next

The criterion could be colour...

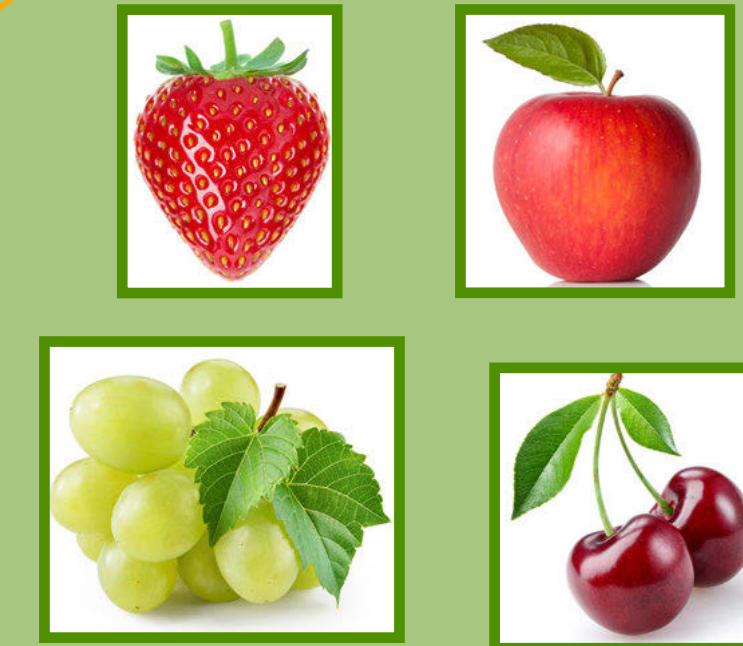
...or whether the item is a fruit or vegetable.

Green

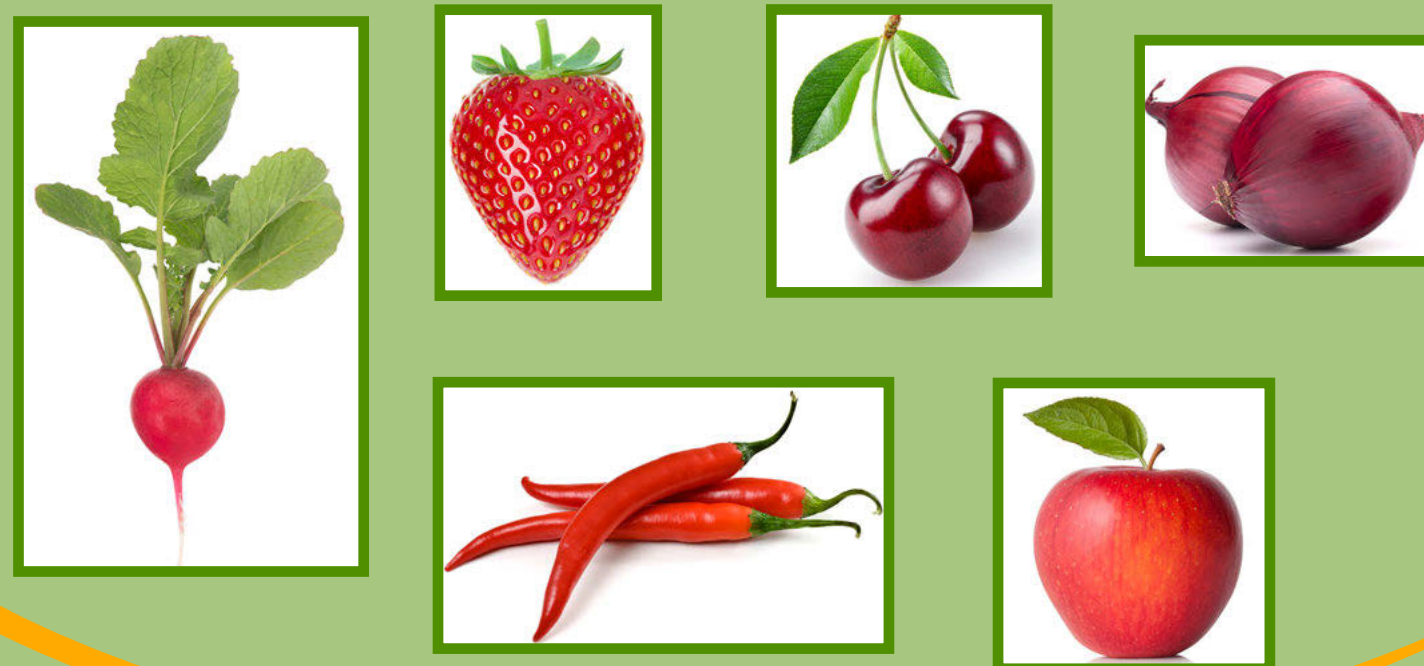


What criterion did you use?

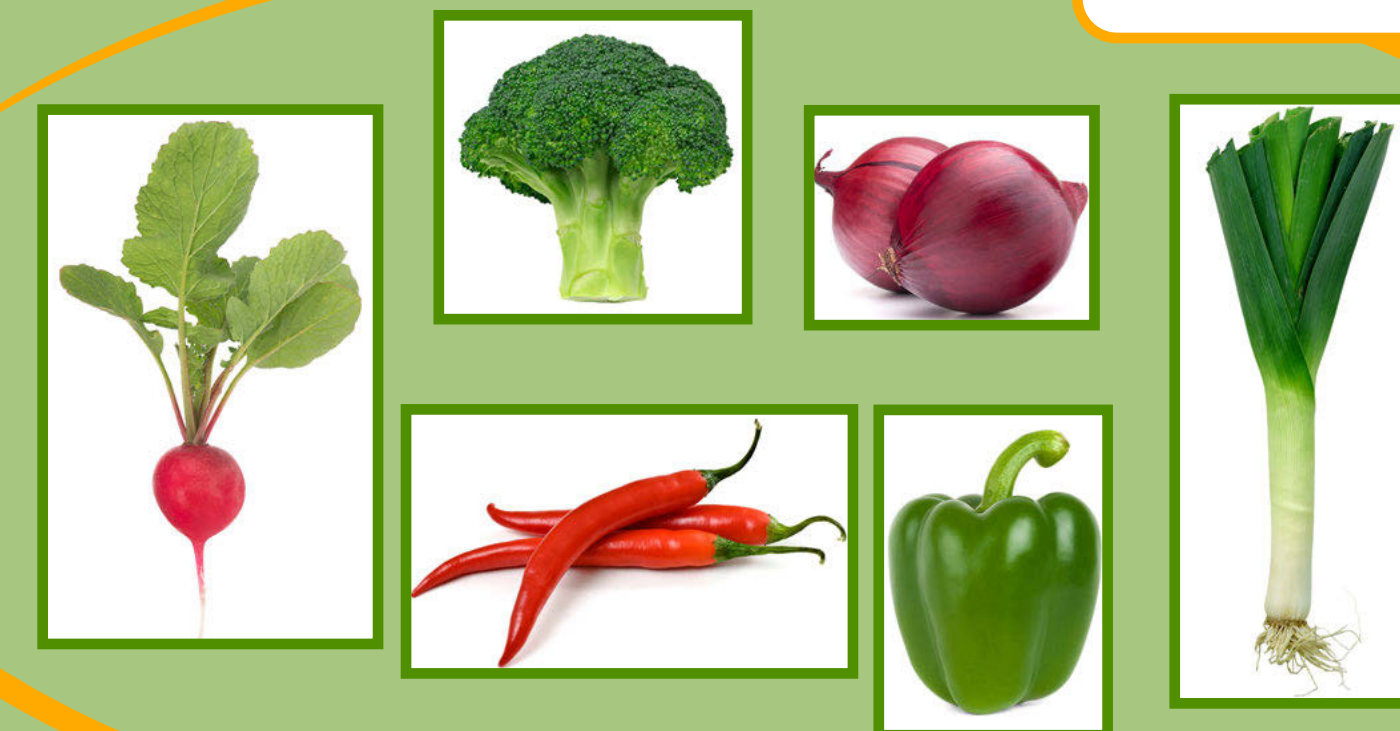
Fruit



Red



Vegetable



Back

Next

Challenge Time!



OK, now that you understand what a criterion is, you have a challenge!

In pairs or small groups, how many different ways can you sort the Picture Cards? Use as many different criteria as you can think of!

How many different criteria did you use to sort the Picture Cards?

Which criterion gave you the most groups?



Which criterion gave you the least groups?

Share your answers.

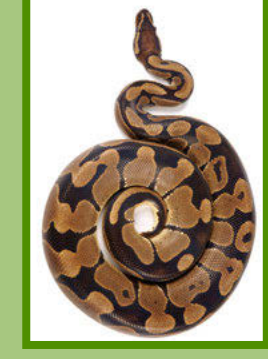
Back

Next

Can you identify the criterion used to sort the Picture Cards into these groups?



Think, pair,
then share
your ideas!



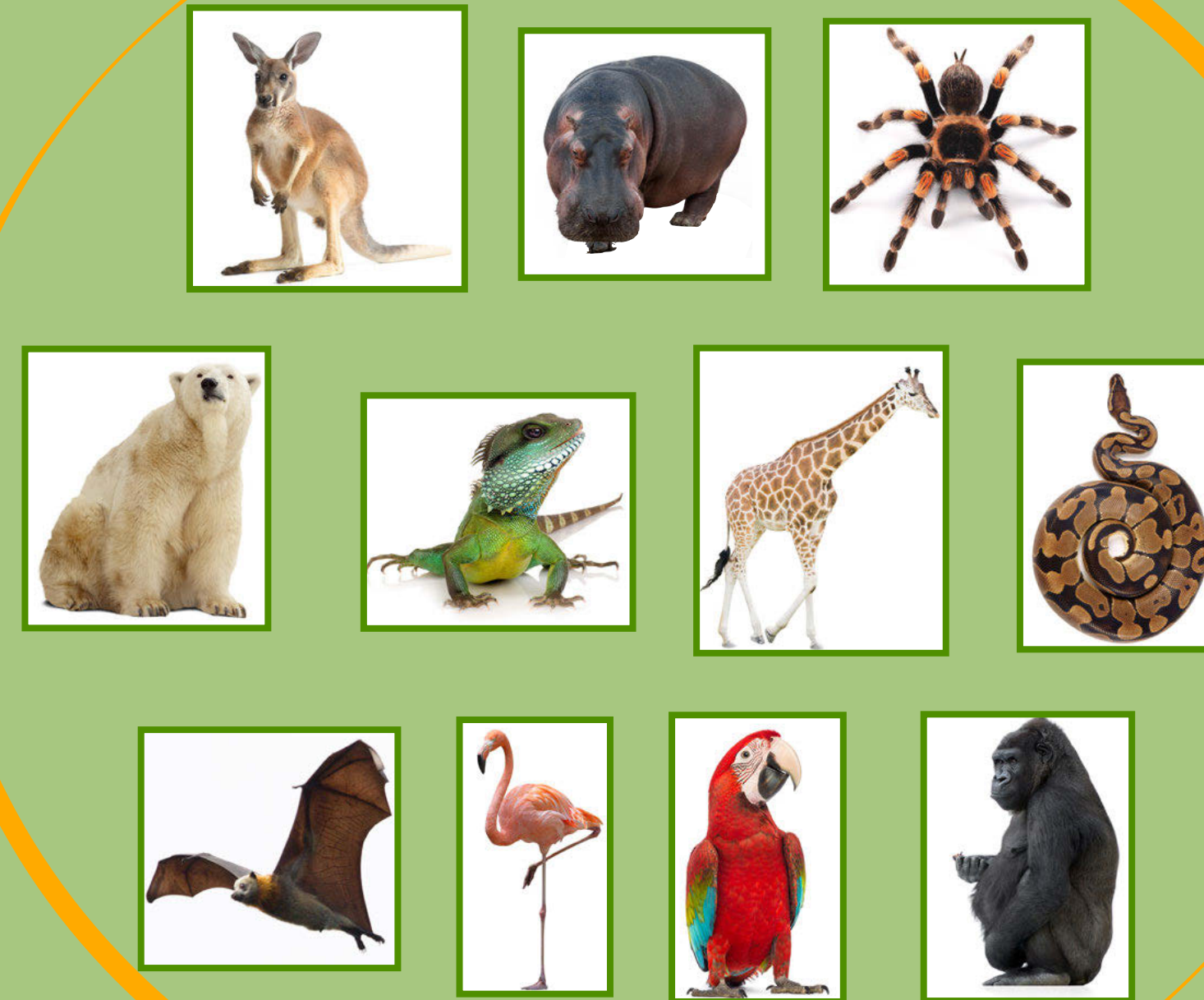
Back

Next

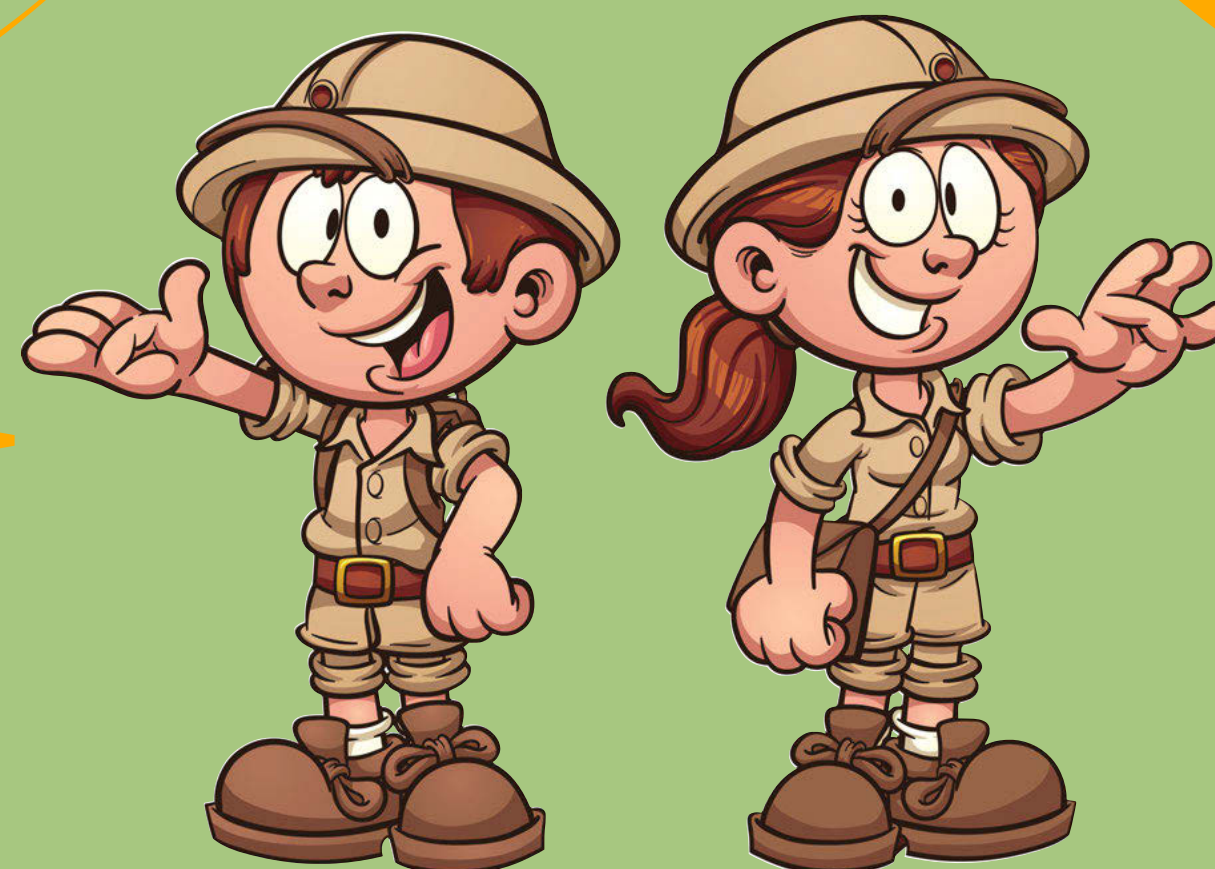
Domesticated animals



Wild animals



A domesticated animal is tame and kept as a pet or on a farm.



A wild animal is one that lives in its natural environment.

Back

Next

Today we are going to focus on sorting and grouping wild animals!

Great Indian bustard



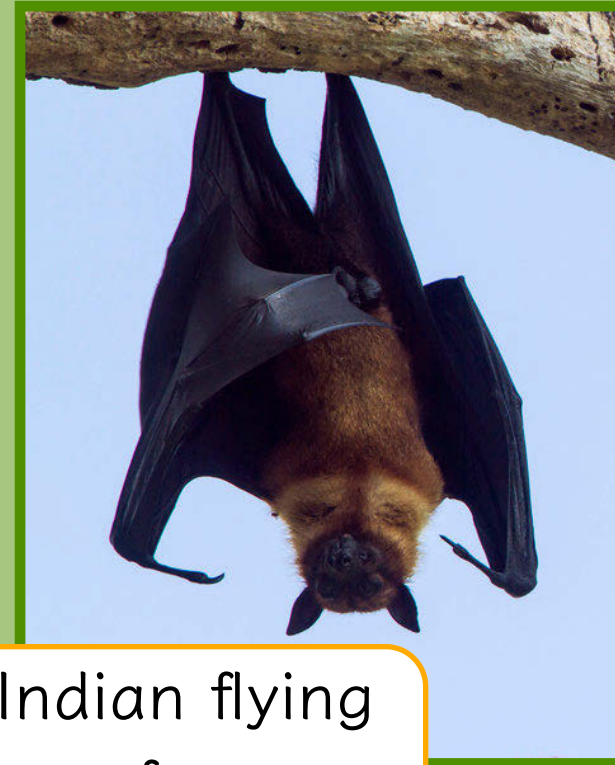
Indian rhinoceros



Tiger spider



Indian flying fox



Dromedary camel



Plum-headed parakeet



Stick insect



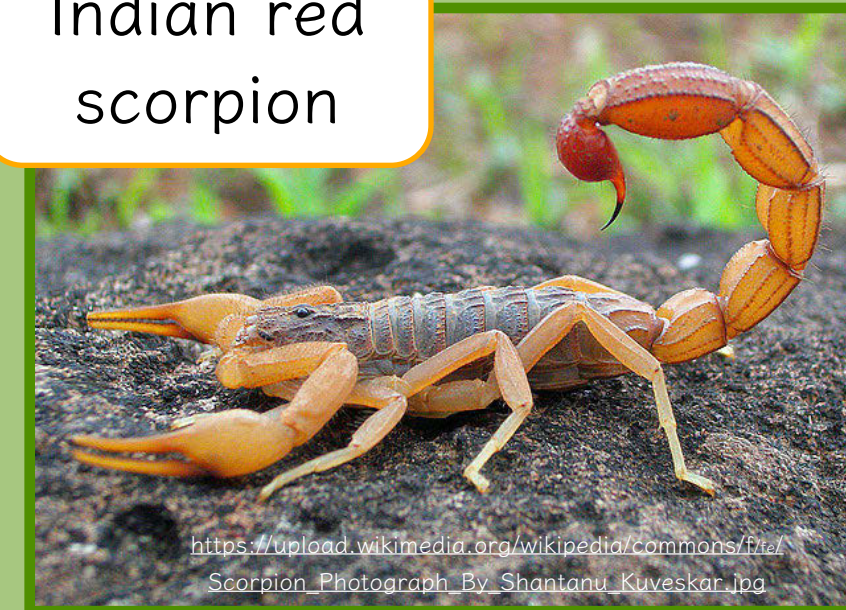
Red fire ant



Spiny-tailed lizard



Indian red scorpion



King cobra



These are all animals found in India.
What criteria might you use to sort them?

Back

Next

How did you sort them?

One way of sorting them would be to group them into vertebrates and invertebrates.

A vertebrate is an animal which has a backbone, or a spine.

An invertebrate is an animal which does not have a backbone, or spine.

Have another look at the animals... can you group them according to these definitions?



Back

Next



Who is a
vertebrate?

Who is an
invertebrate?



Great Indian
bustard



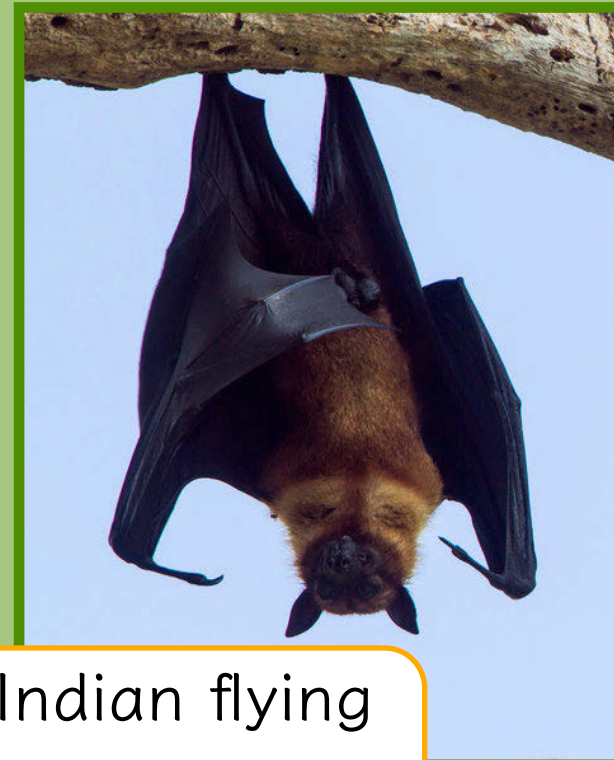
Indian
rhinoceros



Tiger
spider



Indian flying
fox



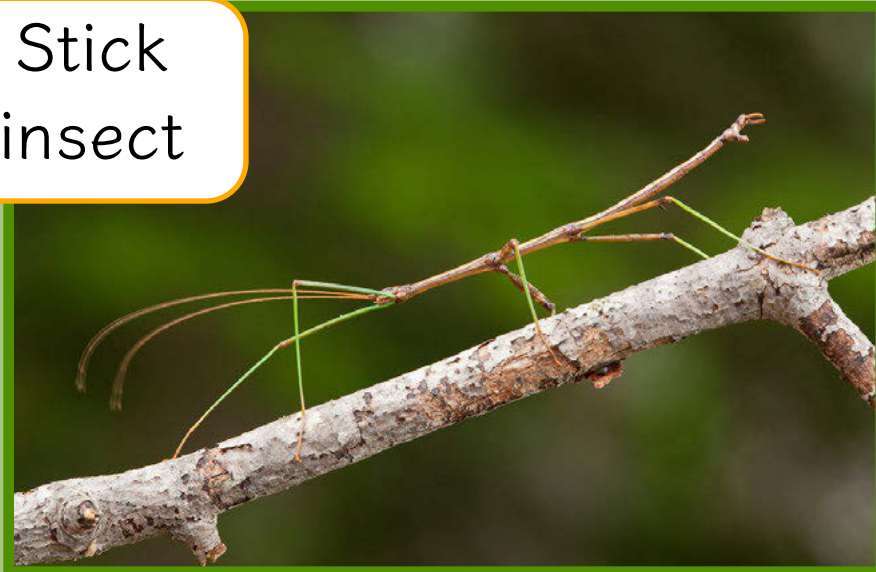
Dromedary
camel



Plum-headed
parakeet



Stick
insect



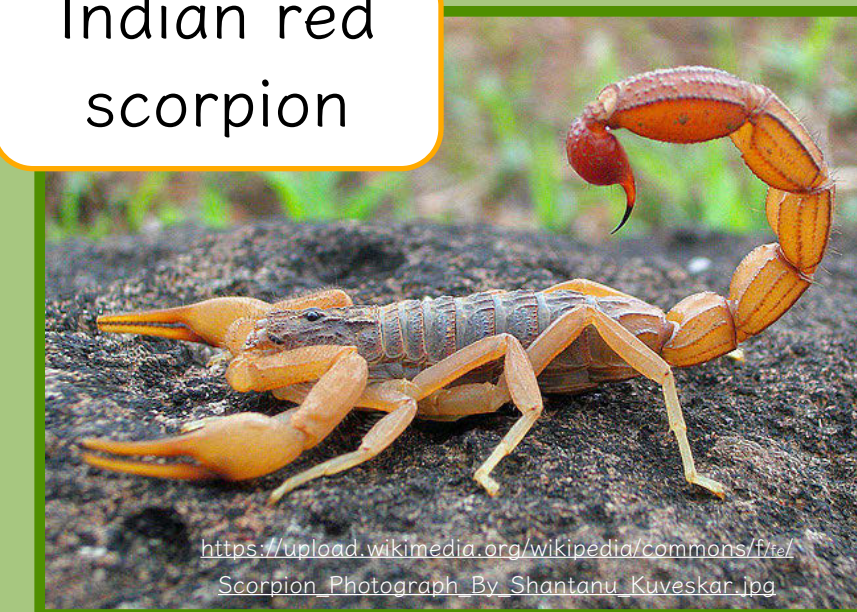
Red
fire ant



Spiny-tailed
lizard



Indian red
scorpion



King
cobra



Back

Next

Vertebrates

Did you sort them correctly?

Invertebrates

Great Indian bustard

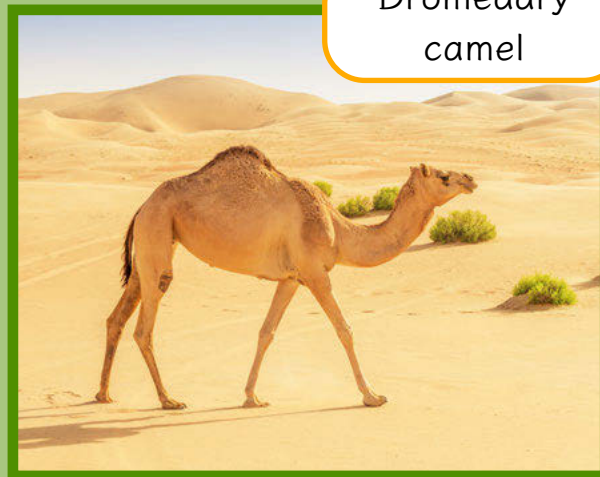


Indian rhinoceros



Plum-headed parakeet

Dromedary camel



Indian flying fox



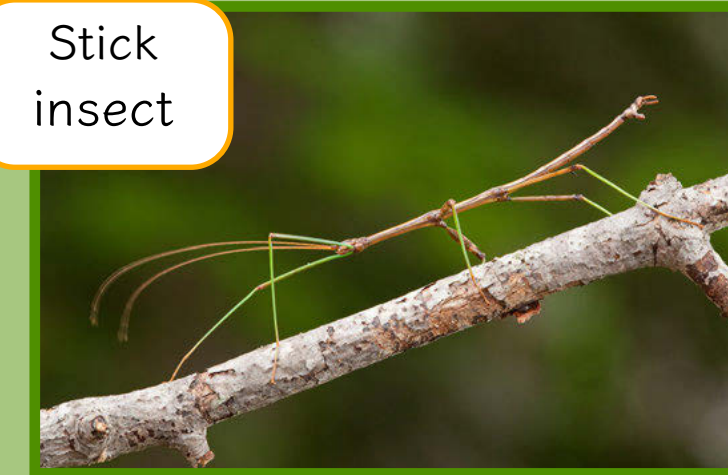
King cobra



Spiny-tailed lizard



Stick insect



Red fire ant



Indian red scorpion



Tiger spider



Which group would you put humans in?

Back

Next

We could also sort the animals according to what 'class' they are.



Mammals

Mammals are vertebrates. They give birth to live young and feed them with milk. They have fur or hair, and are warm-blooded.

Arachnids

Arachnids are invertebrates. They are wingless, with a body divided into two parts. They have eight legs and no antennae. They are cold-blooded.

Birds

Birds are vertebrates. They have feathers and wings. Most, although not all, can fly. They lay eggs and are warm-blooded.



Insects

Insects are invertebrates. They have a body that is divided into three parts, with six legs and two antennae. They are cold-blooded.



Reptiles

Reptiles are vertebrates. They have scales and dry skin. They usually lay eggs, although some give birth to live young. They are cold-blooded.



Have another look at the animals... can you group them according to these definitions?

Back

Next



Who is... a mammal? A bird? A reptile? An arachnid? An insect?

Great Indian bustard



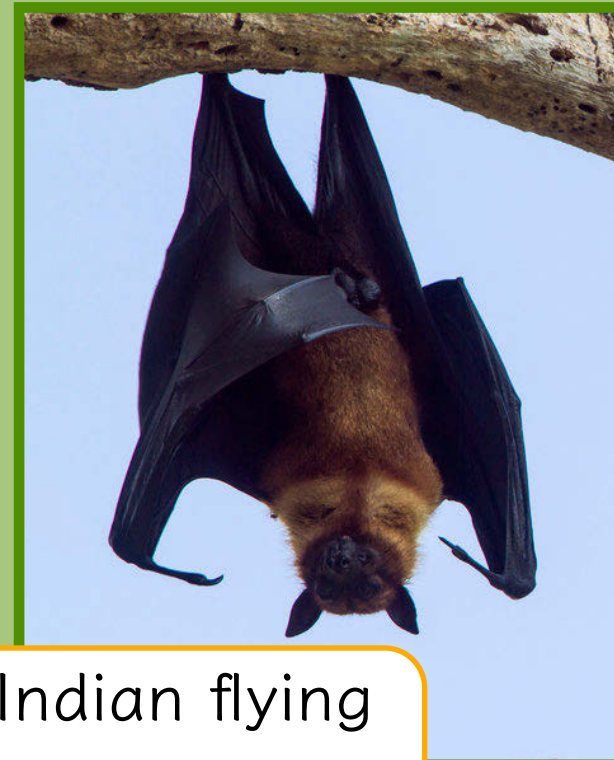
Indian rhinoceros



Tiger spider



Indian flying fox



Dromedary camel



Plum-headed parakeet



Stick insect



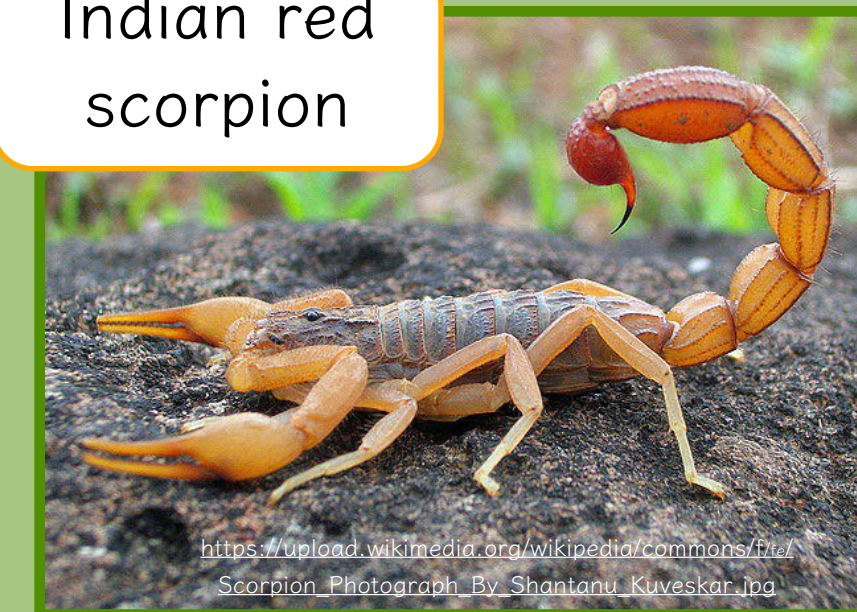
Red fire ant



Spiny-tailed lizard



Indian red scorpion



King cobra



Back

Next

How many did you sort correctly?

Mammals



Dromedary camel



Indian flying fox



Indian rhinoceros

Reptiles



King cobra



Spiny-tailed lizard

Arachnids

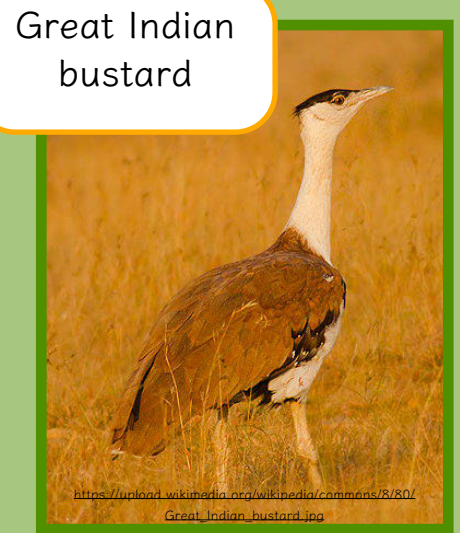


Indian red scorpion



Tiger spider

Birds

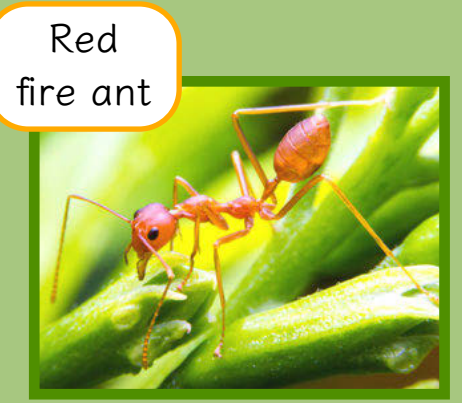


Great Indian bustard



Plum-headed parakeet

Insects



Red fire ant



Stick insect

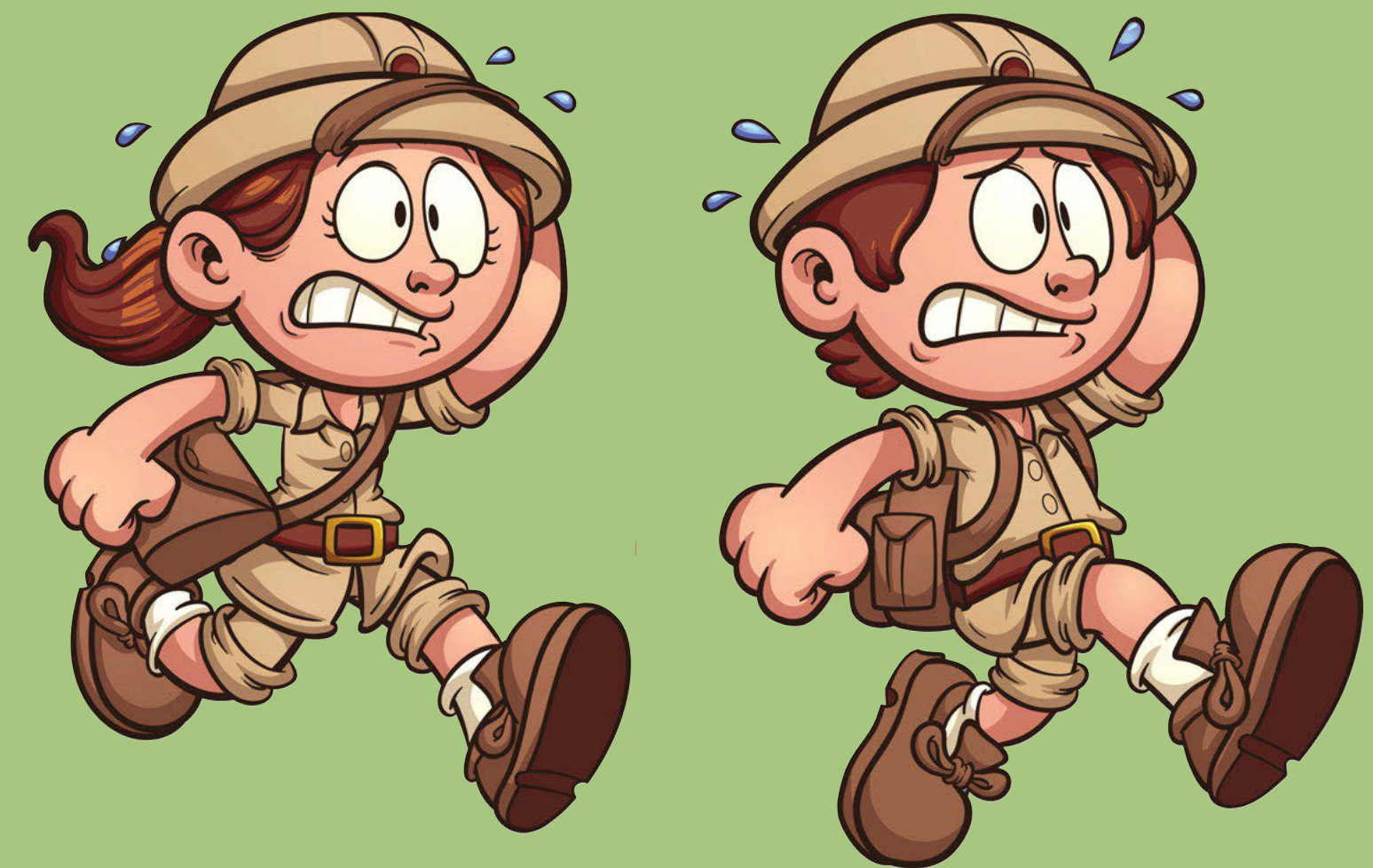


Which group would you put humans in?

Back

Next

Now it's time for you to do some
sorting of your own!



Back

Next

Plenary:

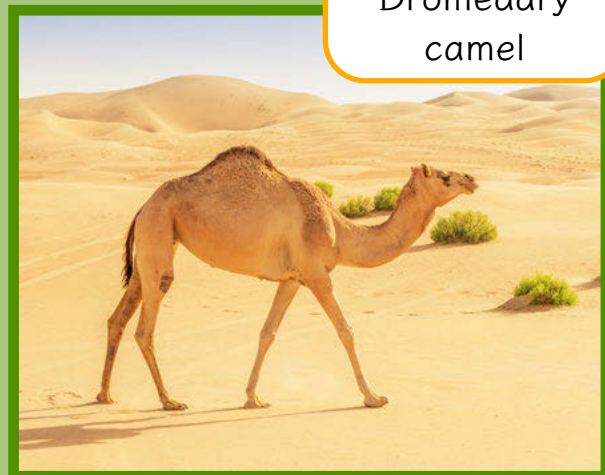
Can you tell what criterion these animals have been sorted by?



Indian flying fox



Indian rhinoceros



Dromedary camel



Great Indian bustard



Red fire ant



Indian red scorpion



Think, pair,
then share your
ideas.



Giant house spider



Slow worm



Red squirrel



Red deer

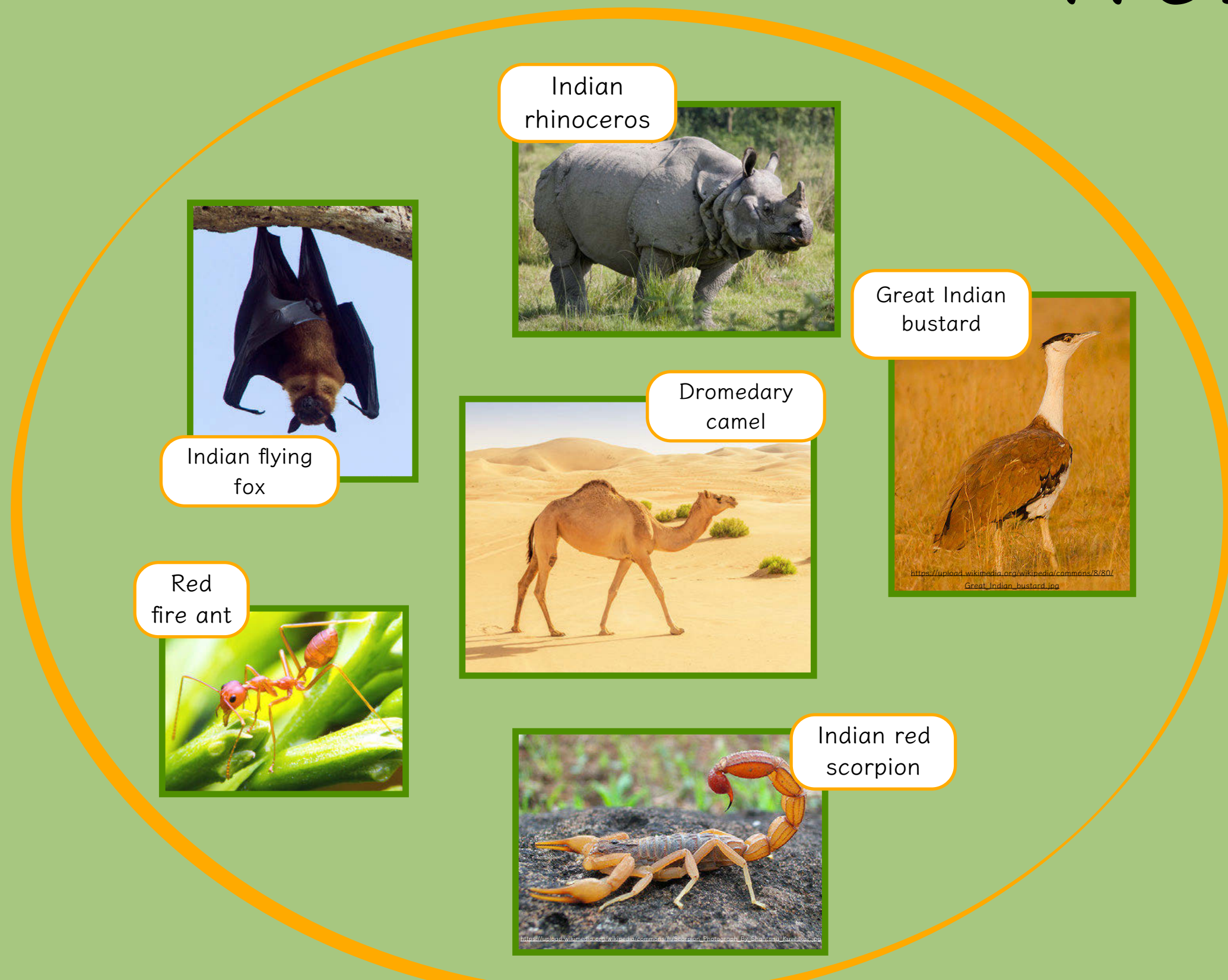


Red admiral

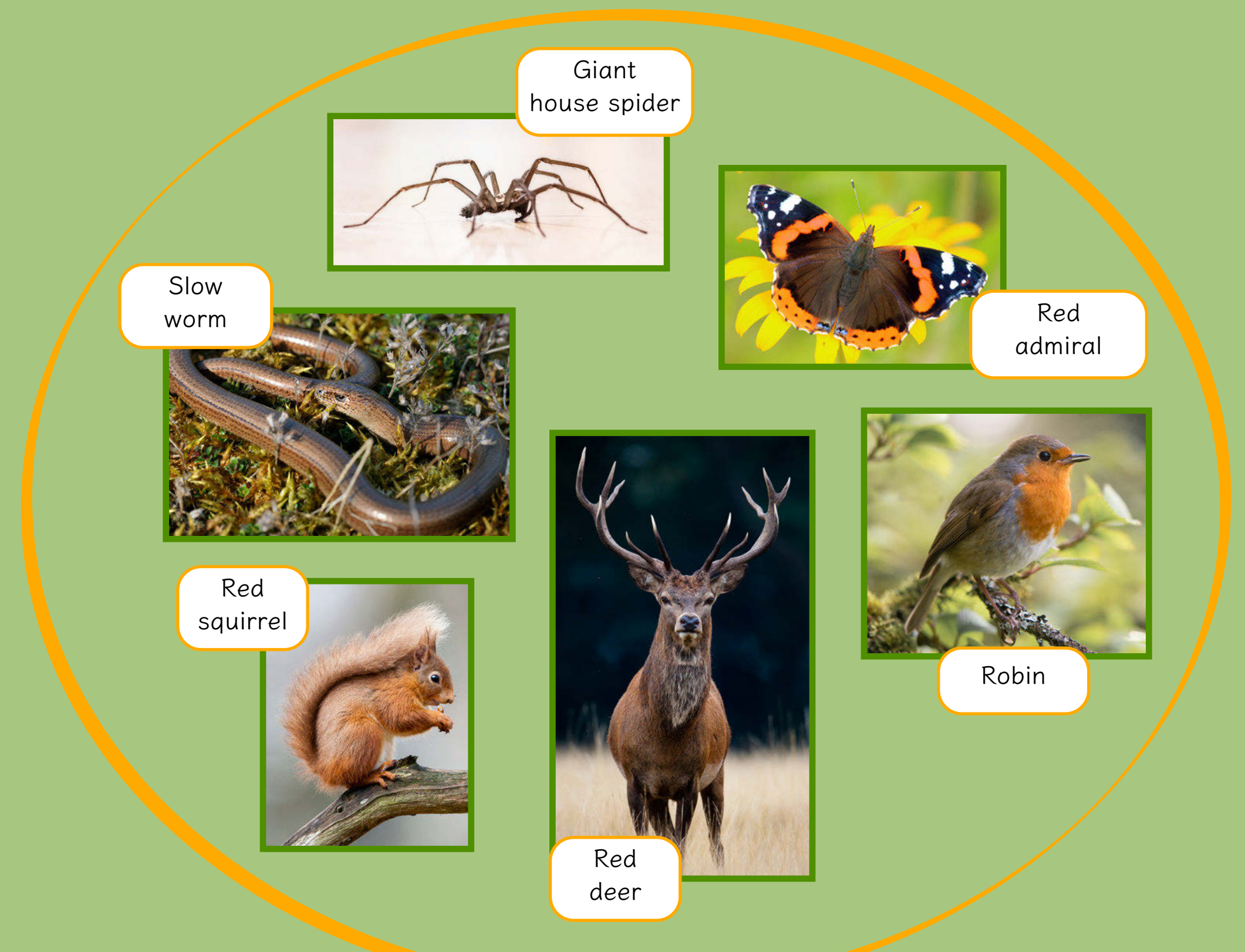


Robin

Did you work out the criterion?
Well done!



Animals found in India



Animals found in the UK