

# Metric measures

1 Sort the metric units into the correct categories.

ml	mm	g	kg	tonne	l	km
----	----	---	----	-------	---	----

Mass	Length	Capacity

2 Match the measure to its definition.

length	how much an object weighs
volume	the amount of space enclosed by a container
mass	how much of a solid, liquid or gas an object can hold
capacity	the measurement of something from end to end

3 Circle the most appropriate unit for each item.

a) the mass of an elephant  
g      kg      l      tonnes

b) the length of a classroom  
cl      cm      m      km

c) the capacity of a water bottle  
cm<sup>3</sup>      m<sup>3</sup>      ml      l

d) the length of a fly  
mm      cm      m      mg

4 Circle the best estimate for each item.

a) the capacity of a glass  
2 ml      20 ml      200 ml      2,000 ml

b) the length of a rounders bat  
50 mm      50 cm      50 m      50 km

c) the mass of a car  
1.5 g      1.5 kg      1.5 tonnes      15 kg

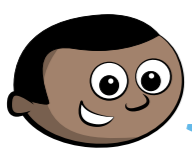
d) the length of a football pitch  
100 cm      100 m      100 km      100 mm

5 Estimate the length of your classroom. Give units with your answer.

Compare answers with a partner.



6



It's impossible to measure the school field using centimetres!

Do you agree with Mo? \_\_\_\_\_  
Explain your thinking.

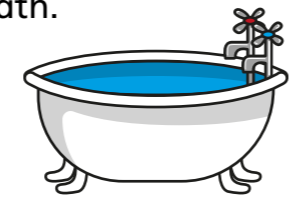
---

---

---

7

Estimate how much water it would take to fill a bath.

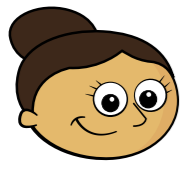


Explain your estimate to a partner.



8

Dora and Ron are estimating the capacity of a jug.



The capacity of a jug is approximately 1 litre.

The capacity of a jug is approximately 600 ml.

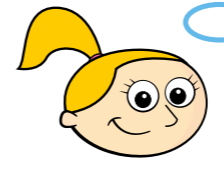


They could both be correct.  
Talk about why with a partner.

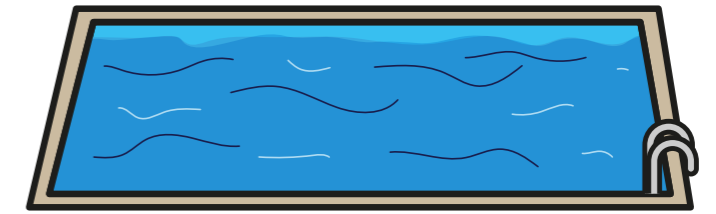


9

Eva is thinking about how to estimate the capacity of a swimming pool.



I know that a metal can holds roughly 200 ml of liquid. So to find out the capacity of a swimming pool, I could just imagine how many cans could fit into it!



Create your own way of estimating the capacity of a swimming pool.

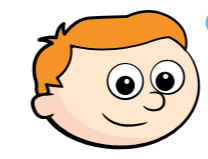
---

---

---

---

10



I wonder how heavy our school is.

Write a plan to estimate the mass of your school.

---

---

---

